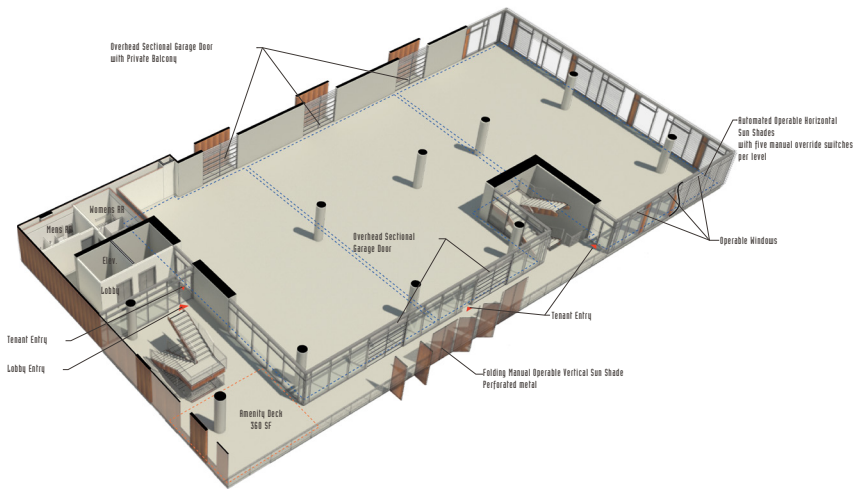
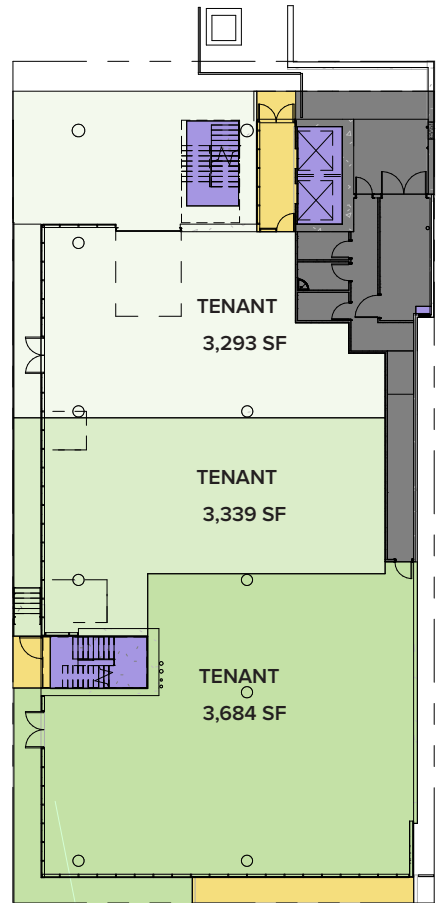
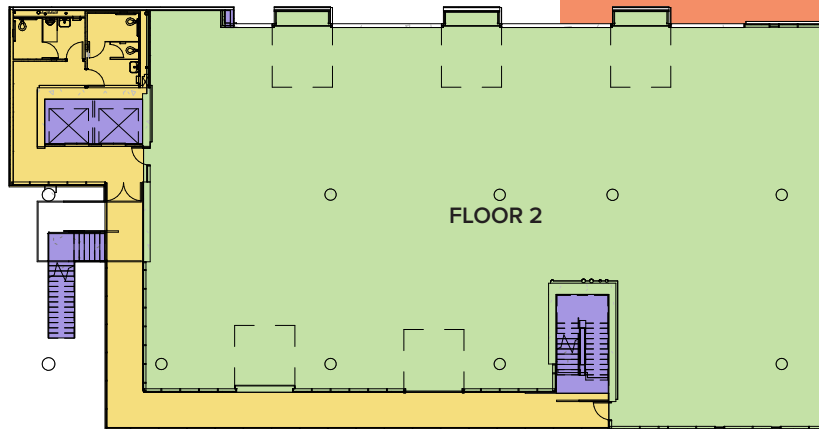
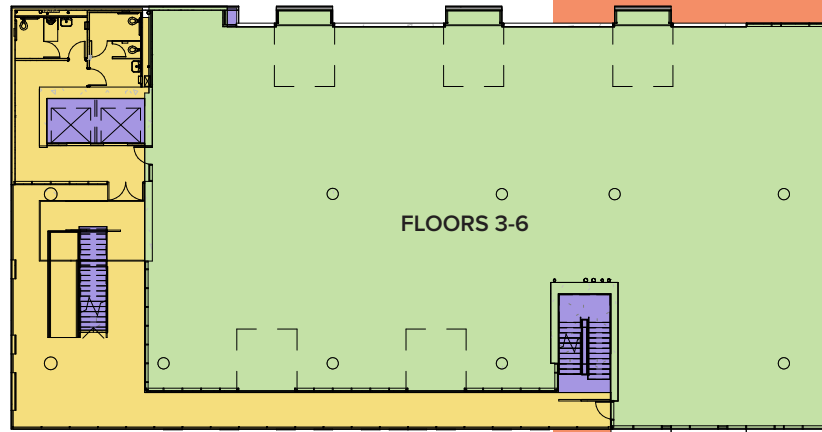


YOUR SPACE.



- Efficient 10,316 square foot floorplates with multiple balconies and outdoor circulators.
- Up to 60,000 square foot available to a single user with freeway visible building top signage.
- Poured concrete structure
- Floor-to-ceiling glass with roll-up exterior doors





FULL FLOOR TENANT EXPERIENCE

Full floor tenants will enjoy ocean breezes through cross ventilation, outdoor circulation space and a private patio.

The highly efficient floor plates and indoor/outdoor activity make Block D the preferred location for growing companies.